

Platform Cable USB

- 1.1 Interfaces
- 2.1 User Guide
- 2.2 Set up the Xilinx ISE
- 2.3 Download to FPGA
- 2.4 Download to FLASH



Welcome to www.wvshare.com
for Easy, Fast & Safe online purchase!

2.2 Set up the Xilinx ISE

1, Launch "xsetup.exe" in "DVD_XILINX_EN\data\Software\Xilinx_ISE_Win_12.2\".

Welcome

We are glad you've chosen Xilinx as your platform development partner. This program will install ISE WebPACK, one of the four ISE Design Suite Editions or one of our two standalone products. The installation process will consist of the steps listed to the left.

You will need to have administrator privileges in order to install this software on Windows operating systems. To reduce installation time, we recommend that you disable any anti-virus software before continuing.

For the product you select to install, we also recommend that you install to a new directory. If you choose to install your selected product into a directory with an older installation of ISE Design Suite, we will require the older version to be uninstalled before proceeding.

Next > Cancel

2,

Accept License Agreements (1 of 2)

Please read the following Software License Agreement and click the checkbox below it to indicate that you accept the terms of the license agreement.

CAREFULLY READ THIS COLLECTION OF INFORMATION AND LICENSE AGREEMENTS. BY CLICKING THE "ACCEPT" OR "AGREE" BUTTON, OR OTHERWISE ACCESSING, DOWNLOADING, INSTALLING OR USING THE SOFTWARE, YOU AGREE ON BEHALF OF LICENSEE TO BE BOUND BY THIS INFORMATION AND LICENSE AGREEMENTS (TO THE EXTENT APPLICABLE TO THE SPECIFIC SOFTWARE YOU OBTAIN AND THE SPECIFIC MANNER IN WHICH YOU USE SUCH SOFTWARE).

IF LICENSEE DOES NOT AGREE TO ALL OF THE INFORMATION AND LICENSE AGREEMENTS BELOW, DO NOT CLICK THE "ACCEPT" OR "AGREE" BUTTON OR ACCESS, DOWNLOAD, INSTALL OR USE THE SOFTWARE; AND IF LICENSEE HAS ALREADY OBTAINED THE SOFTWARE FROM AN AUTHORIZED SOURCE, PROMPTLY RETURN IT FOR A REFUND.

Part One: Overview.

The following information applies to certain items of third-party technology that are included along with certain Xilinx software tools.

The Xilinx Embedded Development Kit (EDK) is a suite of software and other technology that enables Licensee to design a complete embedded processor system for use in a Xilinx Device. EDK includes, among other components, (a) the Xilinx Platform Studio (XPS), which is the development environment, or GUI, used for designing the hardware portion of an embedded processor system; and (b) the Xilinx Software Development Kit (SDK), which is an integrated development environment, complementary to XPS, that is used to create and verify C/C++ embedded software applications. SDK is also made available separately from EDK.

Licensee's use of the GNU compilers (including associated libraries and utilities) that are supplied with SDK may cause Licensee's software application (or board-support package) to be governed by certain third-

I accept the terms of this software license.

< Back Next > Cancel

3,

Accept License Agreements (2 of 2)

Please read the following Software License Agreement and click the checkbox below it to indicate that you accept the terms of the license agreement.

XILINX, INC.
END USER LICENSE AGREEMENT

CAREFULLY READ THIS END USER LICENSE AGREEMENT ("AGREEMENT"). BY CLICKING THE "ACCEPT" OR "AGREE" BUTTON, OR OTHERWISE ACCESSING, DOWNLOADING, INSTALLING OR USING THE SOFTWARE, YOU AGREE ON BEHALF OF LICENSEE TO BE BOUND BY THIS AGREEMENT.

IF LICENSEE DOES NOT AGREE TO ALL OF THE TERMS AND CONDITIONS OF THIS AGREEMENT, DO NOT CLICK THE "ACCEPT" OR "AGREE" BUTTON OR ACCESS, DOWNLOAD, INSTALL OR USE THE SOFTWARE; AND IF LICENSEE HAS ALREADY OBTAINED THE SOFTWARE FROM AN AUTHORIZED SOURCE, PROMPTLY RETURN IT FOR A REFUND.

1. Definitions

"Authorization Codes" means any FLEXlm license key, license file, license manager, dongle or other key, code or information issued by (or on behalf of) Xilinx that is necessary to download, install, operate and/or regulate User access to the applicable Software.

"Bitstream" means a machine-executable, binary form of a core used to program a Xilinx Device.

"Licensee" means the individual, corporation or other legal entity to which Xilinx has issued a Seat as described herein.

"User" means a specific human being who is identified by Licensee as a person who is authorized to use the applicable Software on behalf of Licensee. In cases where Licensee is an individual who has obtained a Seat from Xilinx for his/her individual use, Licensee and User are one and

I accept the terms of this software license.

< Back

Next >

Cancel

4.

Select Edition to Install

Edition List

- ISE WebPACK
- ISE Design Suite: Logic Edition
- ISE Design Suite: Embedded Edition
- ISE Design Suite: DSP Edition
- ISE Design Suite: System Edition
- Software Development Kit: Standalone Installation
- Lab Tools: Standalone Installation

Disk Space Required : 9030 MB

Description of ISE Design Suite: System Edition

ISE Design Suite: System Edition contains everything you need to do a complete system design. It includes all Xilinx software tools: ISE Design Suite Logic Edition, the Embedded Development Kit (EDK) and System Generator for DSP.

< Back

Next >

Cancel

5.

Select Installation Options

Select the desired installation options below. Selection of these options may result in additional programs being run at the conclusion of the installation program.

<input checked="" type="checkbox"/> Acquire or Manage a License Key
<input checked="" type="checkbox"/> Install Cable Drivers
<input checked="" type="checkbox"/> Install WinPCap for Ethernet Hardware Co-simulation
<input checked="" type="checkbox"/> Enable WebTalk to send software, IP and device usage statistics to Xilinx

[Select/Deselect All](#)

[Description of Acquire or Manage a License Key](#)

Most Xilinx applications now require a license key file in order to run. If this selection is enabled, the Xilinx License Configuration Manager will be opened in order to assist you either in acquiring a new license file or in managing an existing license file. If this is your first time using Xilinx ISE Design Suite 12.2, it is highly recommended that you use this application to acquire or install your license file.

[< Back](#) [Next >](#) [Cancel](#)

6.

Select Destination Directory

Select the directory where you want the software installed.

C:\Xilinx\12.2 [Browse...](#)

Destination Directory : C:\Xilinx\12.2\ISE_DS

Disk Space Required : 9030 MB

Disk Space Available : 20821 MB

Select a Program Folder

The name you enter here will appear in the Start Menu->Programs list on your desktop.

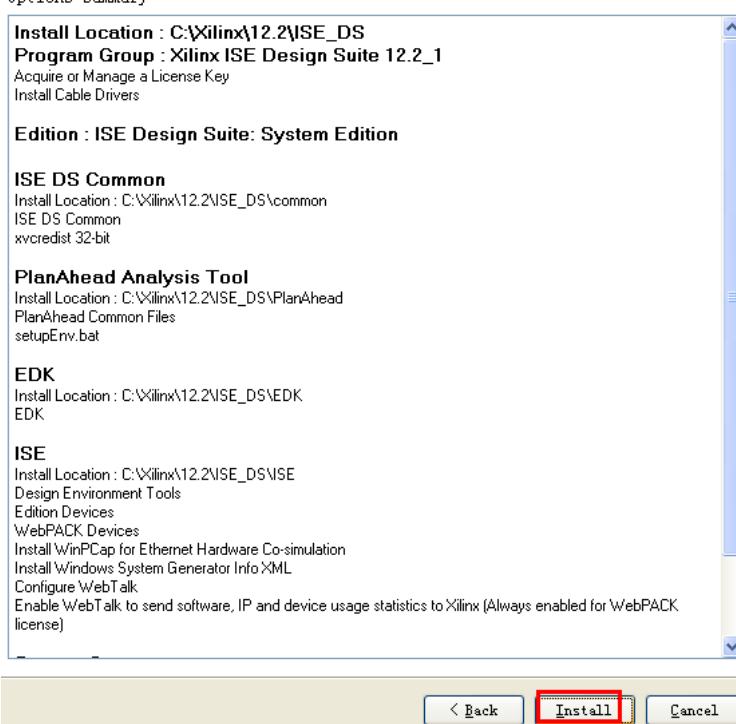
Xilinx ISE Design Suite 12.2_1

Import tool preferences from previous version and change project file association to ISE Design Suite 12.2.

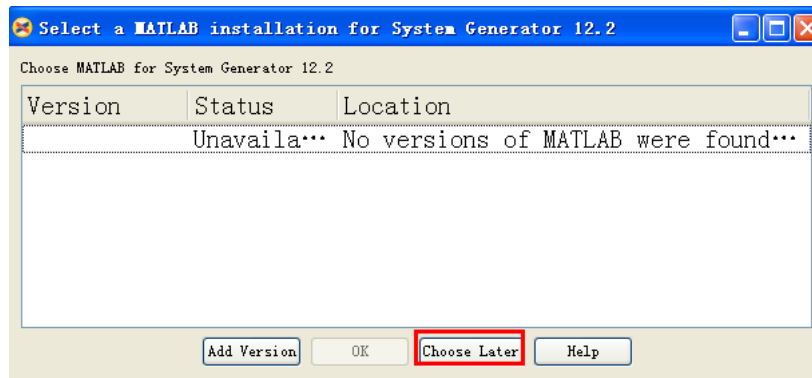
*EDK XPS project preferences are stored in the registry. Until these preferences are set for EDK, XPS designs ported from older versions will not work.

[< Back](#) [Next >](#) [Cancel](#)

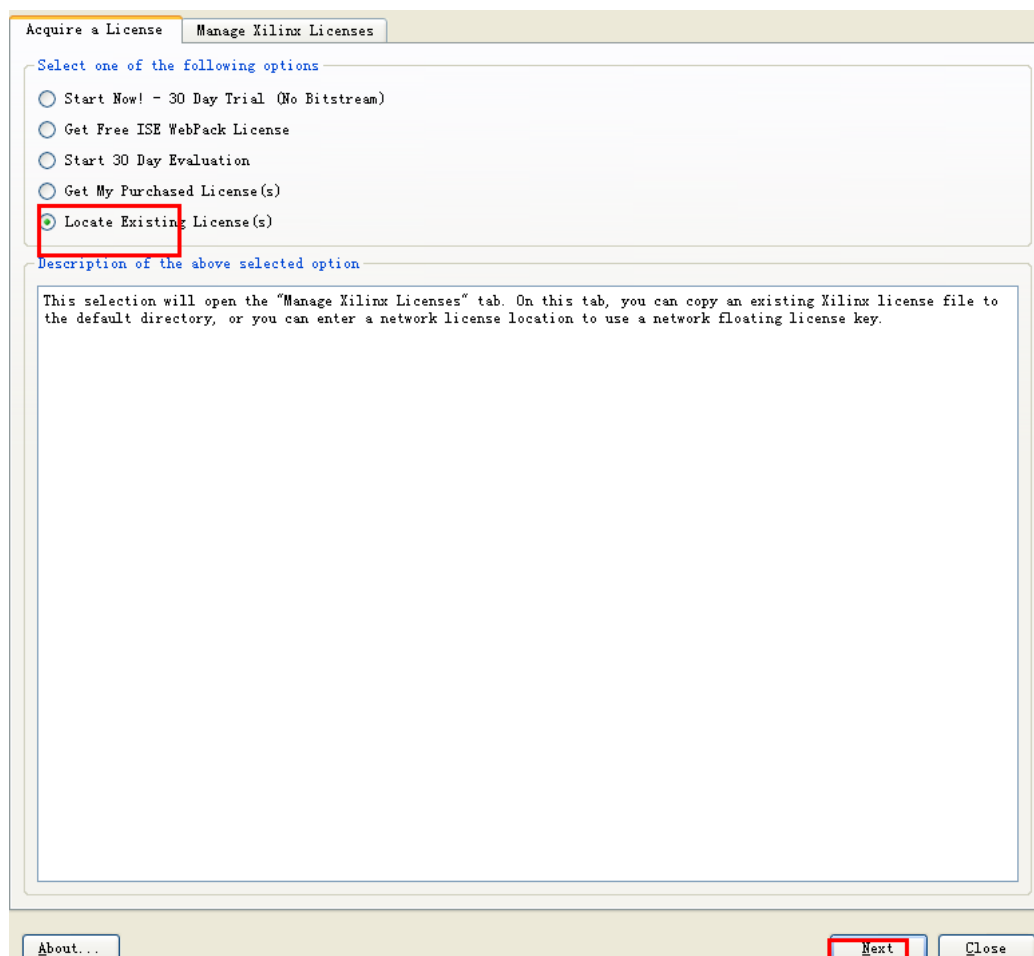
7.



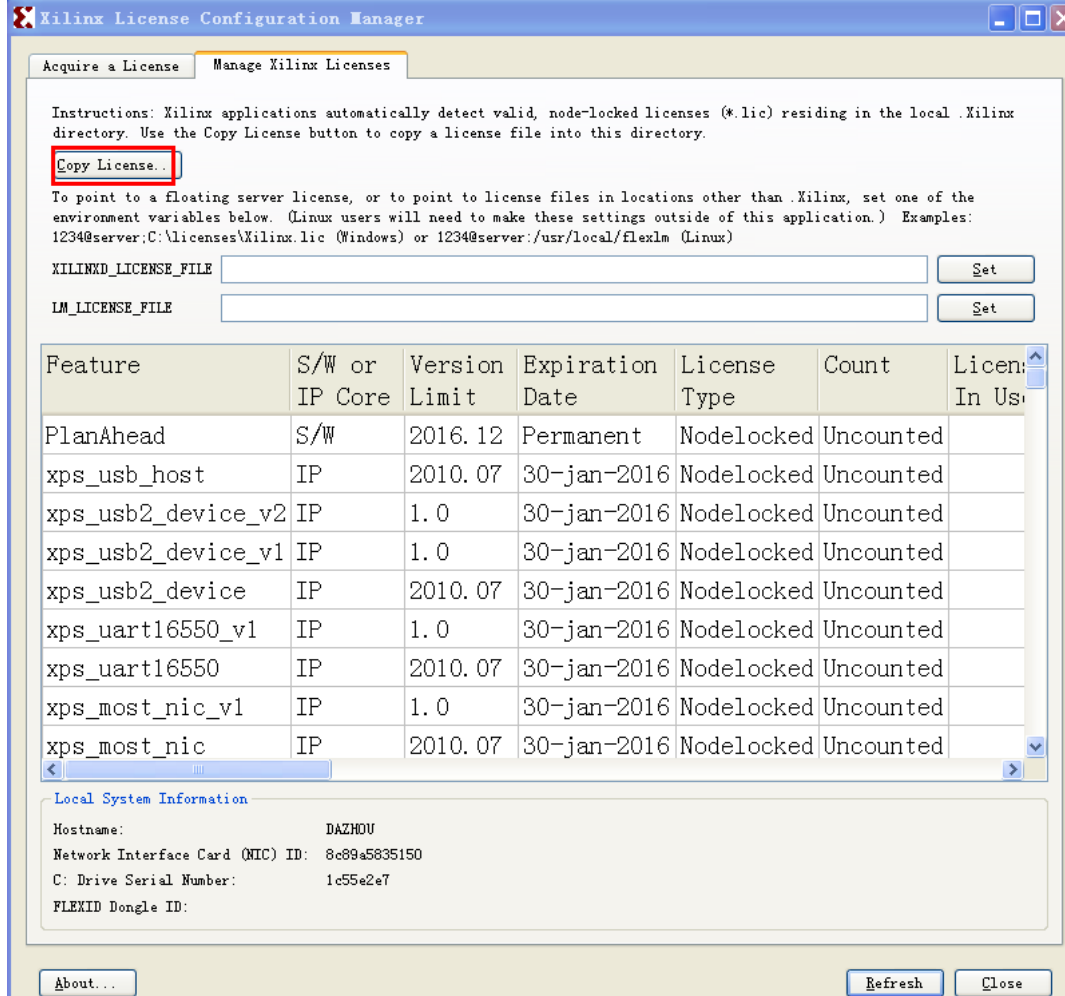
8,



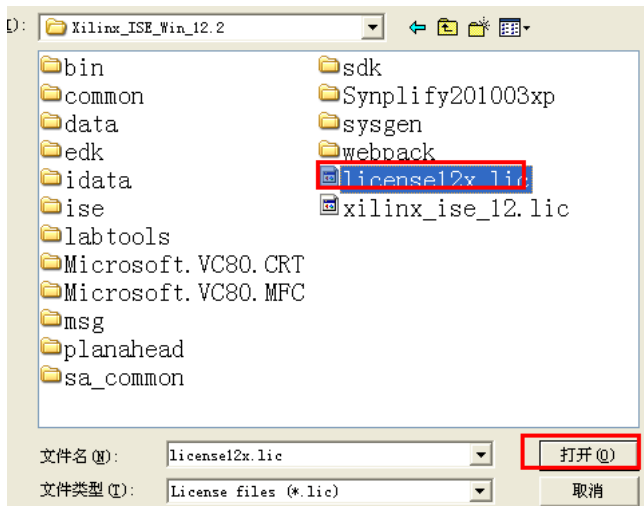
9,



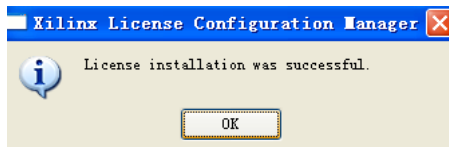
10,



11.



12.



13.

Install Completed

Congratulations! You have successfully installed Xilinx ISE Design Suite: System Edition.

ISE Design Suite 12.2 Installer

- Welcome
- Accept License Agreements
- Select Edition to Install
- Select Installation Options
- Select Destination Directory
- > Installation

Copyright (c) 1995-2010 Xilinx, Inc. All rights reserved.
XILINX, the Xilinx logo and other designated brands included herein are trademarks of Xilinx, Inc. PowerPC is a trademark of IBM, Inc. All other trademarks are the property of their respective owners.

The environment variables are written to the settings[32|64].bat file for each application and an encompassing settings[32|64].bat at "C:\Xilinx\12.2\ISE_DS". In order to set the variables in your environment, you must source these settings[32|64].bat files from "C:\Xilinx\12.2\ISE_DS".

The shortcuts created by the ISE Design Suite Installer source the appropriate settings script prior to launching each tool. Command line and script users should source the settings script prior to launching the tools.

Finish

© 2012 Waveshare Electronics. All rights reserved.

Owned by Waveshare International Ltd.

Thank you for choosing our products!

If you have any question or suggestion, please contact us via email: service@wvshare.com