

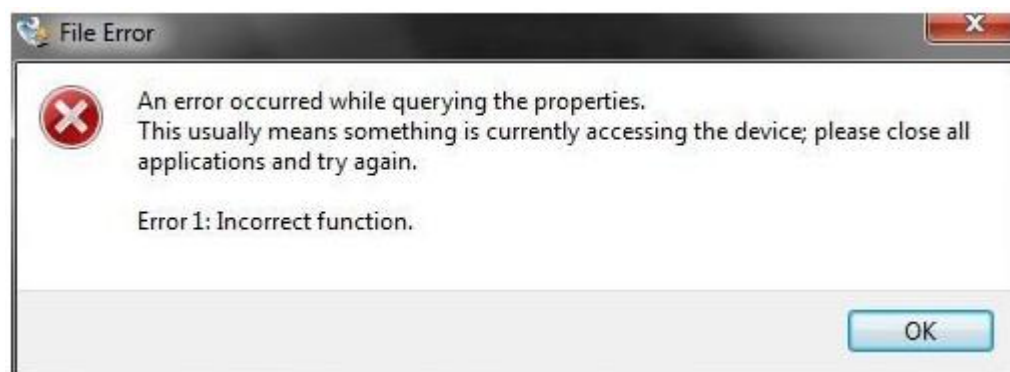
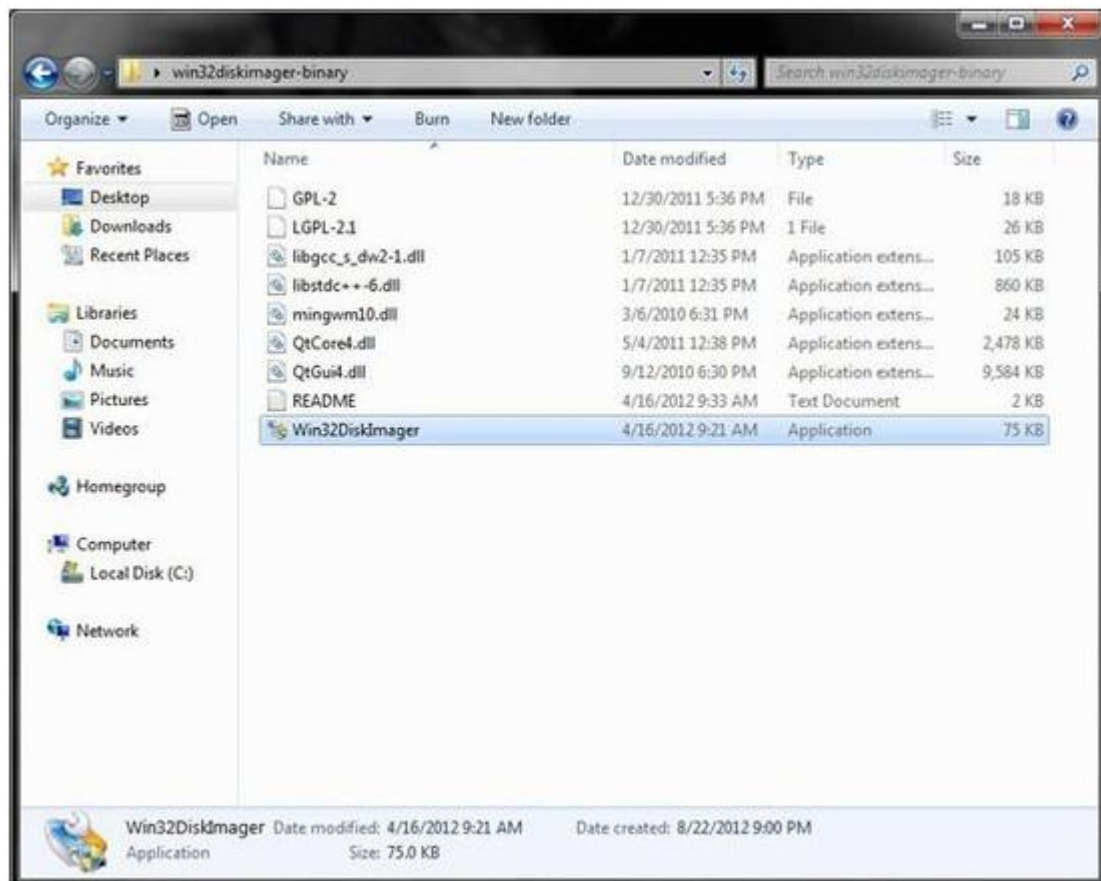
## Writing IMG files to SD Card

For Windows System Users:

1: Here is what we provided in our DVD:

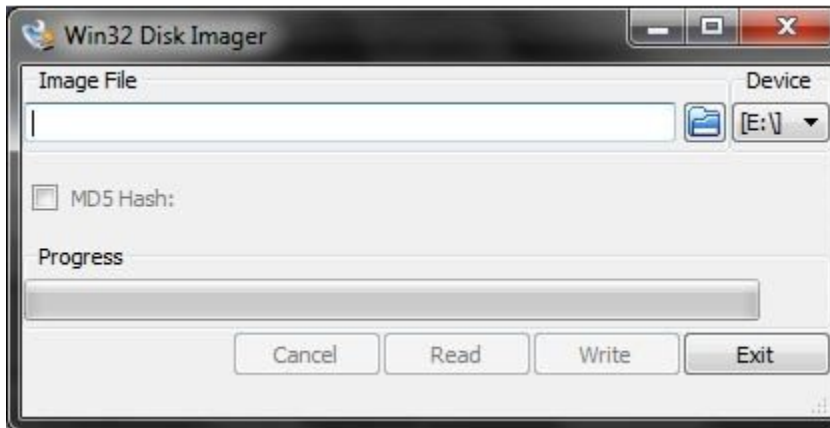
document	2014/8/15 16:30
IMAGE	2014/8/6 10:31
schematic	2014/8/6 11:27
software	2014/8/6 10:34

2.Open: Software\Win32DiskImager\Win32DiskImager.exe

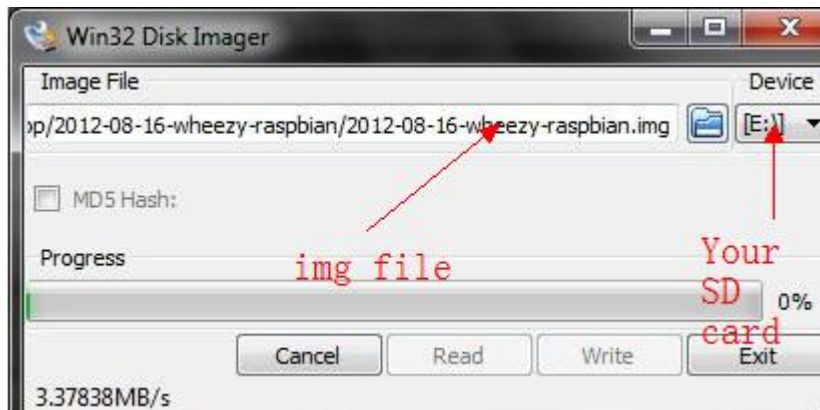


(In win7 , it might popup view ,then click "OK")

3. Select the img files, and choose your SD Device:



Like this:



4. then write it, after it complete, it will pop up tips.



5. then you can boot Raspberry pi ,and begin to set up the system.

```
Raspi-config

info          Information about this tool
expand_rootfs  Expand root partition to fill SD card
overscan      Change overscan
configure_keyboard  Set keyboard layout
change_pass    Change password for 'pi' user
change_locale  Set locale
change_timezone  Set timezone
memory_split   Change memory split
ssh           Enable or disable ssh server
boot_behaviour Start desktop on boot?
update        Try to upgrade raspi-config

                <Select>                <Finish>
```

More details:

<http://www.waveshare.net/txt/RPi-UM.htm>