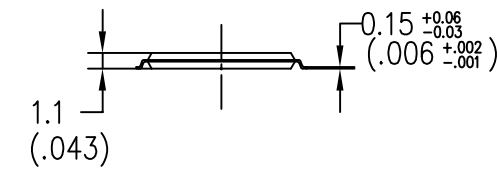
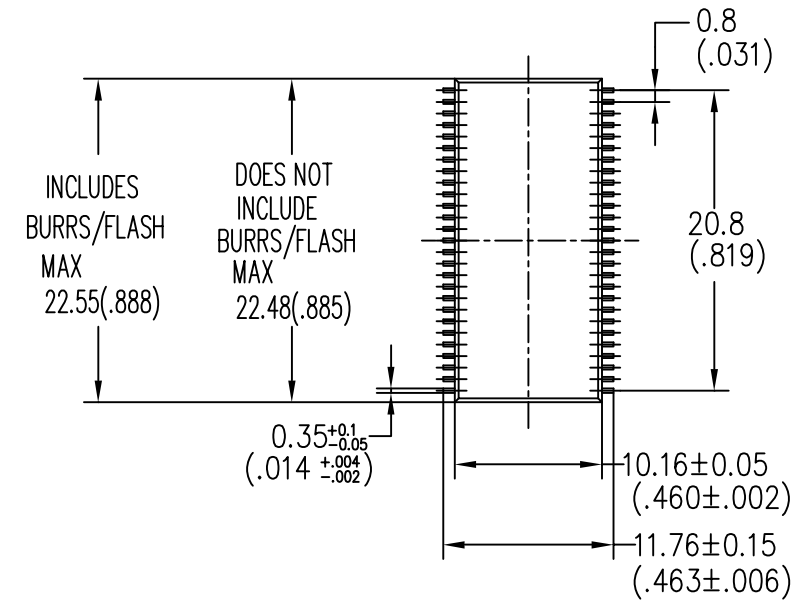
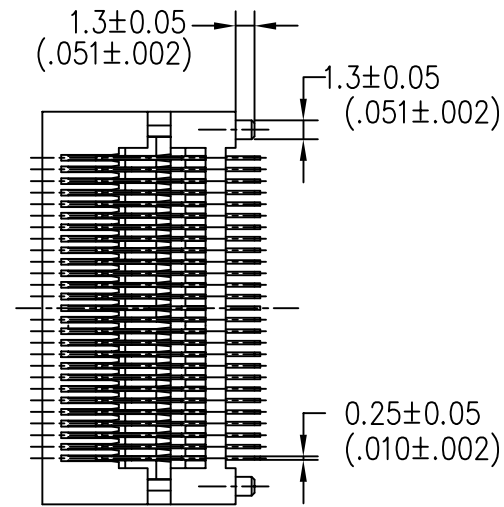
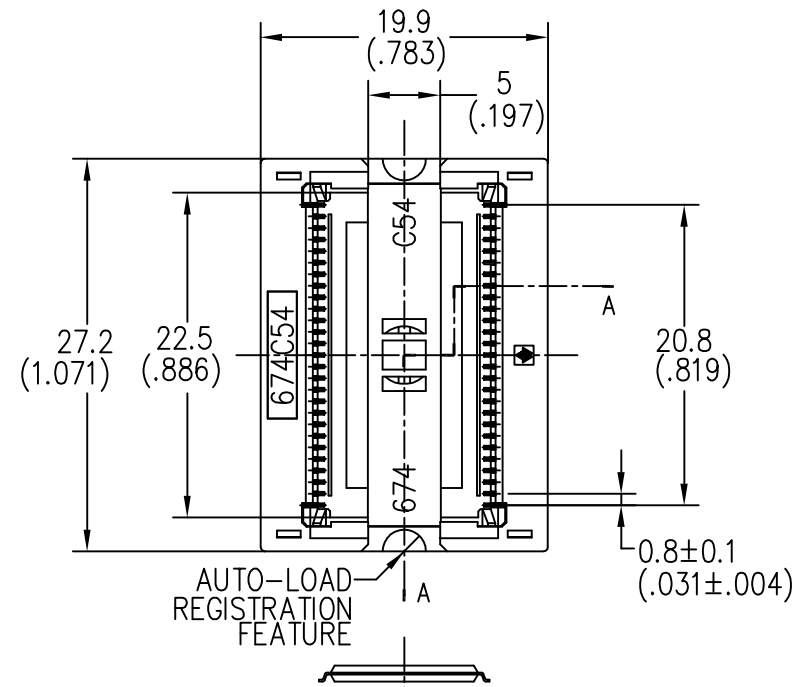
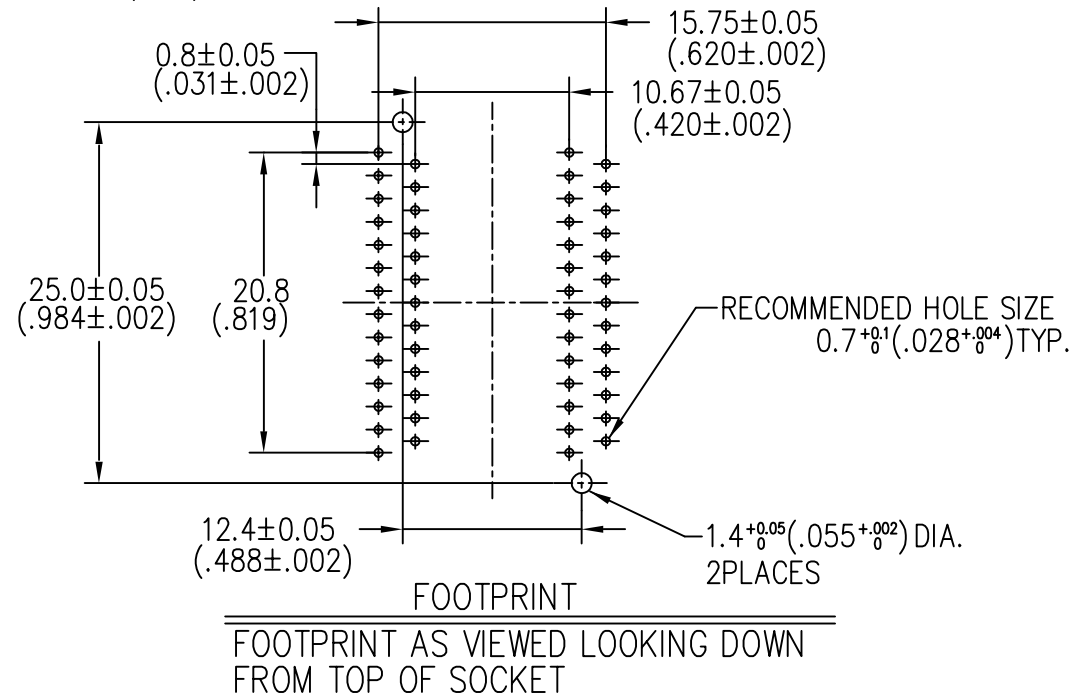
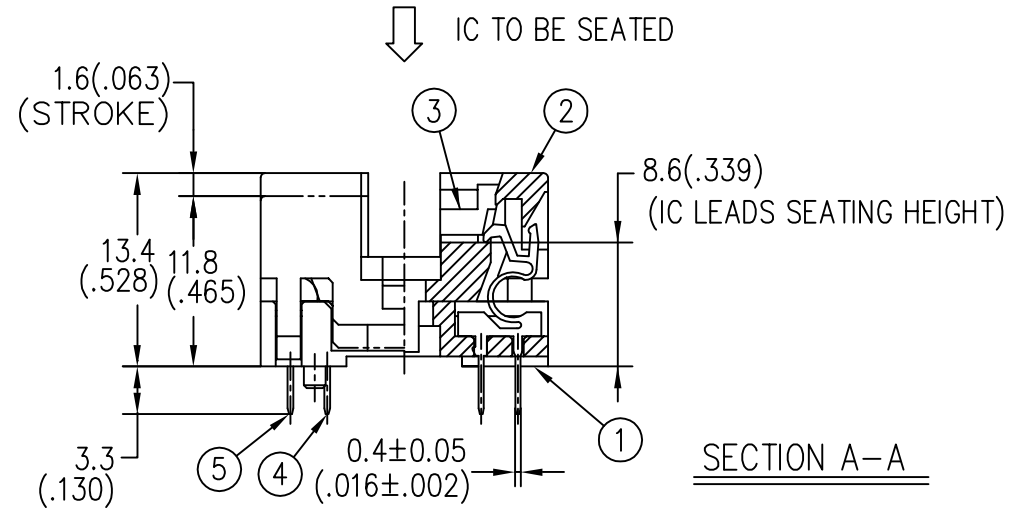


REV	DATE	DESCRIPTION	BY
0	Feb 25 1997	CDN97032	M,I
A	Apr 4 1997	DCN97022	M,N



RECOMMENDED ICX REF)



**THIS IS NOT A CONTROLLED DOCUMENT
PLEASE CONSULT FACTORY FOR LATEST REVISION LEVEL**

⑤	CONTACT-(B)	Be Cu	27	PLATING : Au
④	CONTACT-(A)	Be Cu	27	PLATING : Au
③	BASE-B	PES(GF)	1	COLOR : BLACK
②	COVER	PEI(GF)	1	COLOR : BLACK
①	BASE-A	PEI(GF)	1	COLOR : BLACK

P.NO	PART DESCRIPTION	MATERIAL	QTY	NOTE
GENERAL TOLERANCES ±0.3 [±.012]				
UNIT	SCALE	ANGLE	TITLE	
mm[in.]	2/1	3rd.	TSOP(II)COMPACT 400mil 54P SOCKET	
DRAWN	/ /	/ /	PART NO. 674C1542211-A11	
CHECKED	/ /	/ /	DWG NO. 674MSA054	
APPROVED	/ /	/ /	REV A	SHEET 1/1

WELLS JAPAN LIMITED
ウエルズ・ジャパン株式会社